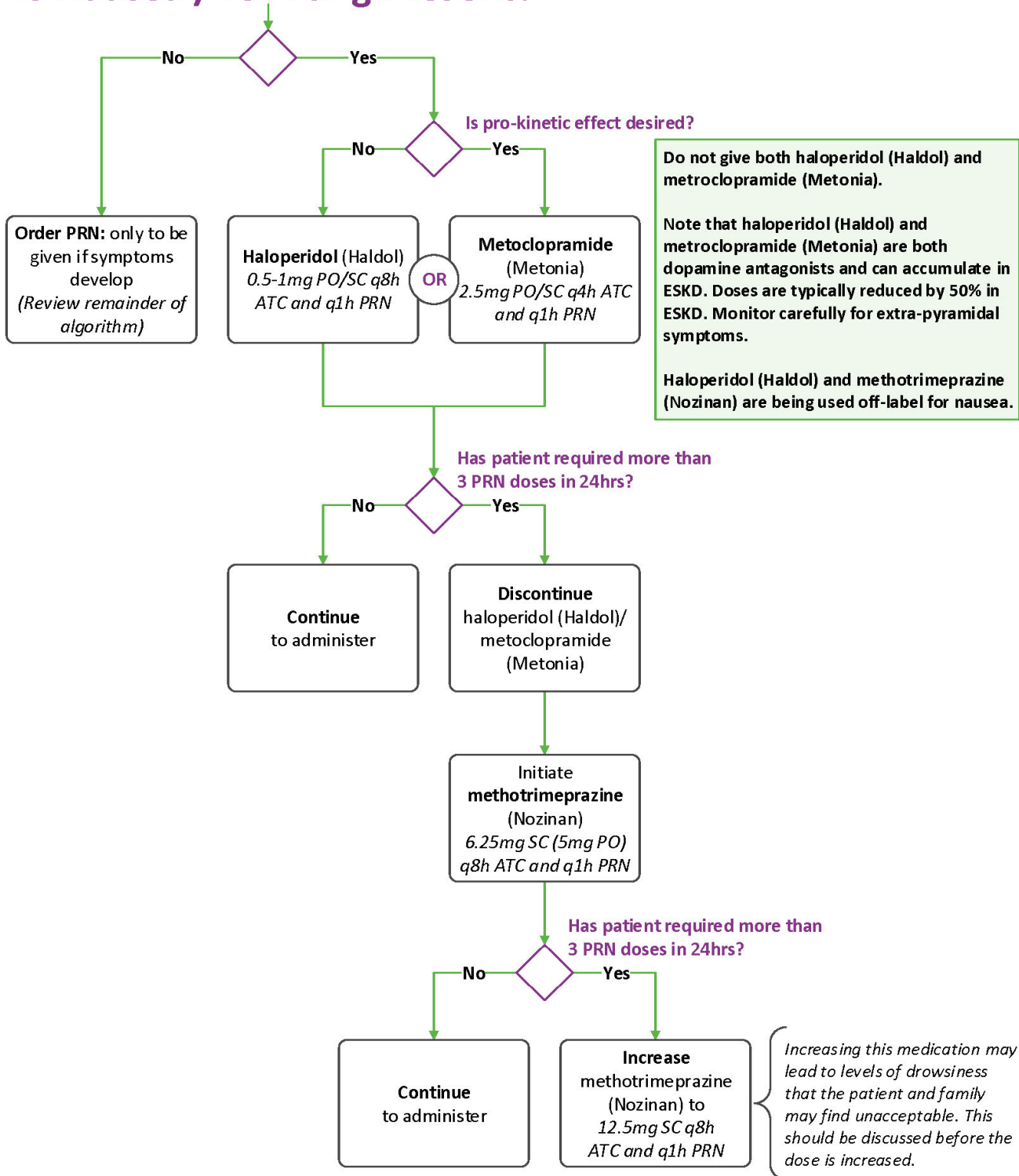


***All patients should have an order for a subcutaneous anti-emetic at the end of life. Patients should have appropriate orders in place whether the symptom is present or absent.**

Is Nausea /Vomiting Present?



Do not give both haloperidol (Haldol) and metoclopramide (Metonia).

Note that haloperidol (Haldol) and metoclopramide (Metonia) are both dopamine antagonists and can accumulate in ESKD. Doses are typically reduced by 50% in ESKD. Monitor carefully for extra-pyramidal symptoms.

Haloperidol (Haldol) and methotrimeprazine (Nozinan) are being used off-label for nausea.

Conservative Kidney Management Acronym Legend

Acronym:	Intended Meaning:
ATC	Around the Clock
BID	Twice Daily
CKD	Chronic Kidney Disease
CKM	Conservative Kidney Management
COPD	Chronic Obstructive Pulmonary Disease
CO ₂	Carbon Dioxide
EOL	End of Life
ESA	Erythropoietin Stimulating Agent
ESKD	End Stage Kidney Disease
GFR	Glomerular Filtration Rate
GI	Gastrointestinal
g/L	Grams per litre
HgB	Hemoglobin
IN	Intranasal
IU	International Units
IV	Intravenous
kg	Kilogram
mcg	Microgram
mg	Milligram
mL	Millilitre

Acronym:	Intended Meaning:
mmol/L	Millimoles per Litre
OTC	Over the Counter
PO	By Mouth
PRN	As Needed
NSAID	Non-steroidal Anti-inflammatory Drugs
q(1-8)d	Every (Time Eg, 2) Days
q(1-8)h	Every (Time Eg, 4) Hours
q(1-8)weeks	Every (Time Eg. 2) Weeks
QHS	At Bedtime
RLS	Restless Leg Syndrome
SC	Subcutaneous
SL	Sublingual
SNRI	Serotonin and Norepinephrine Reuptake Inhibitors
SSRI	Selective Serotonin Reuptake Inhibitors
TCA	Tricyclic Antidepressant
TID	Three Times a Day
>	Greater Than
≥	Greater Than or Equal To
<	Less Than
≤	Less Than or Equal To